

# P2X\*M

## MANIFOLDS

### FOR ISO 4401-03 VALVES

### WITH PORTS ON REAR

#### SERIES 10

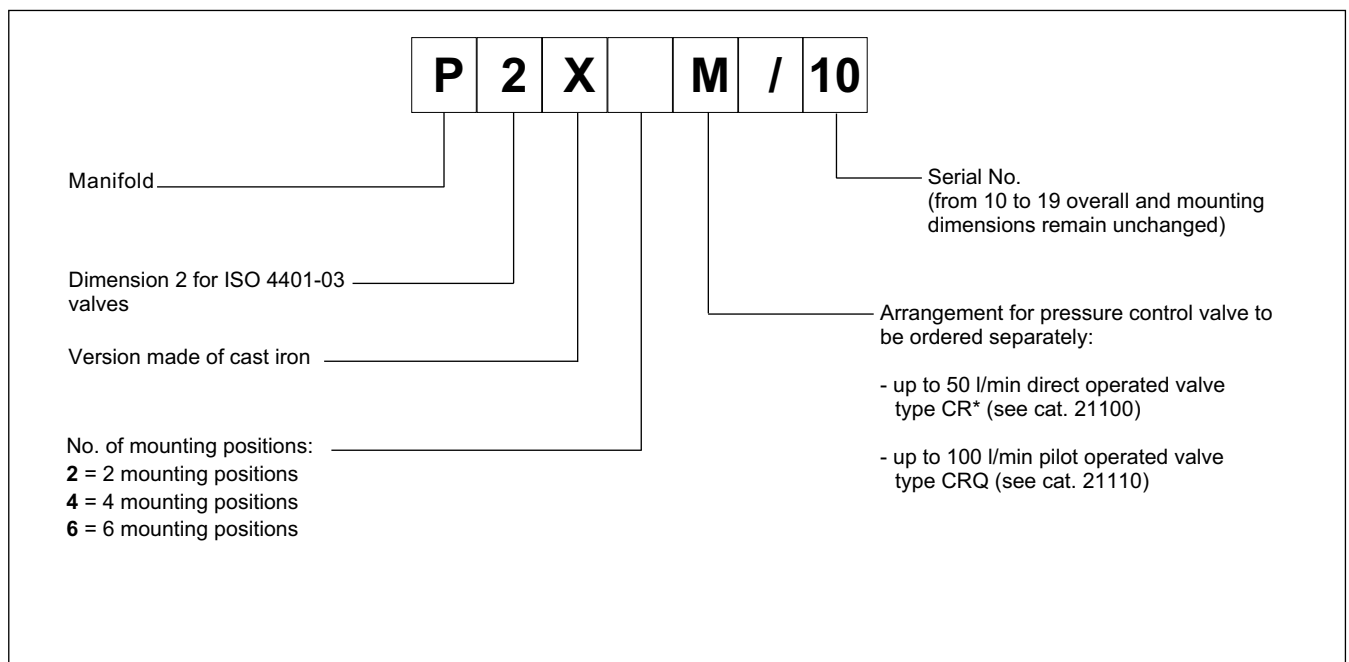
- The P2X\*M series of manifolds is designed for connection in parallel of two or more ISO 4401-03 valves.
- The monobloc design enables the simple creation of circuits without the use of pipes and fittings, thereby reducing overall dimensions to a minimum.
- Subplates are arranged for the installation of a pressure control valve with cartridge.
- Each section is fitted with work ports A and B positioned on the rear of the subplate.
- Subplates are fitted with additional rear ports P and T.
- Subplates are made of cast iron.

**p max 350 bar**  
**Q max 100 l/min**

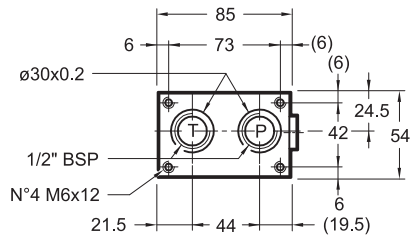
#### TECHNICAL SPECIFICATIONS

|   |   |            |
|---|---|------------|
| Maximum operating pressure<br>- ports P - A - B<br>- port T                   | bar                                       | 350<br>140 |
| Maximum flow  | l/min                                     | 100        |
| Port dimensions:<br>P - pressure<br>T - drainage<br>B - users<br>A - drainage | BSP                                       | 1/2"       |
| Ambient temperature range   | °C  | -20 / +60  |
| Fluid temperature range   | °C  | -20 / +80  |
| Fluid viscosity range   | cSt                                       | 10 ÷ 400   |
| Fluid contamination degree  | cSt                                       | 25         |
| Recommended viscosity   | According to ISO 4406:1999 class 20/18/15 |            |

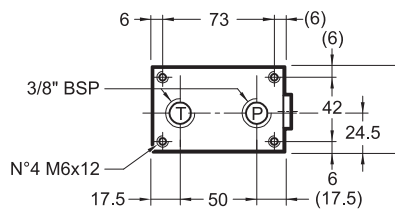
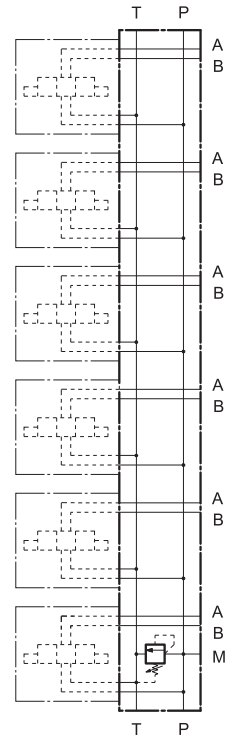
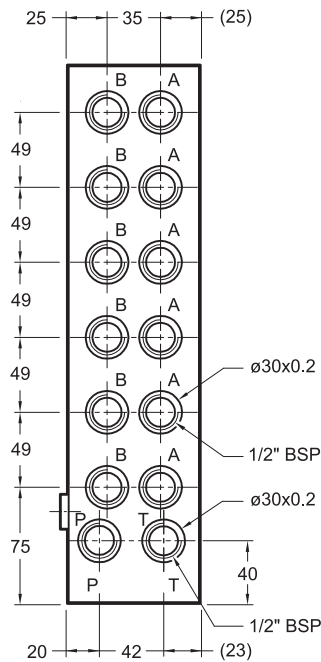
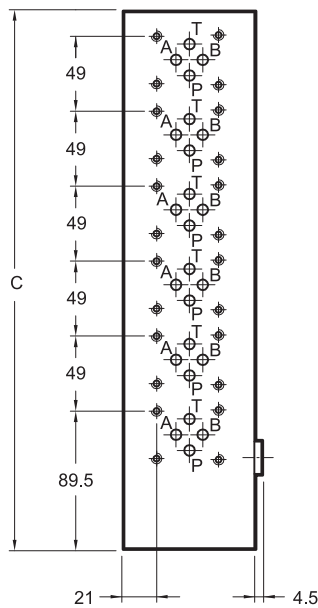
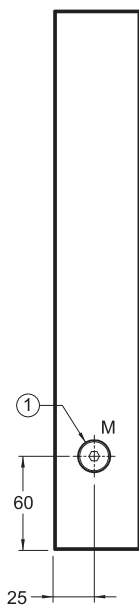
#### 1 - IDENTIFICATION CODE



### 2 - OVERALL AND MOUNTING DIMENSIONS



Es. Subplate with 6 mounting positions and pressure control valve type CR\*/21



dimensions in mm

| Manifold | No. of valves mounting positions | C   |
|----------|----------------------------------|-----|
| P2X2M/10 | 2                                | 150 |
| P2X4M/10 | 4                                | 250 |
| P2X6M/10 | 6                                | 350 |

|   |   |
|---|---|
| 1 | Pressure gauge port 1/4" BSP plugged  |
| 2 | Arranged for the installation of a pressure control valve (to be ordered separately - see par. 1) |