

WELD-RING FOR "GE" BALL-JOINT

HWRE

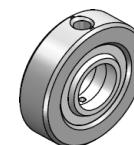
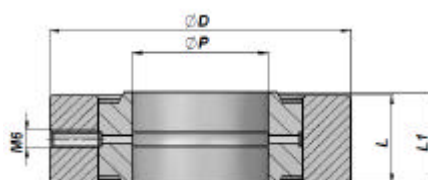

Code	For	ØD	L	ØP	kg
HWRE040026	GE ø15	40	11	26	0.06
HWRE050035	GE ø20	50	14	35	0.11
HWRE069042	GE ø25	69	19	42	0.35
HWRE075047	GE ø30	75	20	47	0.41
HWRE080055	GE ø35	80	22	55	0.45
HWRE094062	GE ø40	94	26	62	0.79
HWRE100068	GE ø45	100	30	68	0.98
HWRE120075	GE ø50	120	33	75	1.78
HWRE138090	GE ø60	138	40	90	2.69

Box	Pcs
BOXHWRE040026	200
BOXHWRE050035	200
BOXHWRE069042	50
BOXHWRE075047	50
BOXHWRE080055	25
BOXHWRE094062	20
BOXHWRE100068	10
BOXHWRE120075	10
BOXHWRE138090	5

MATERIAL:

STEEL S355J0 (Fe510C) - S355JR (A105)

WELD-RING WITH NOT CHANFREINED "GE" BALL-JOINT

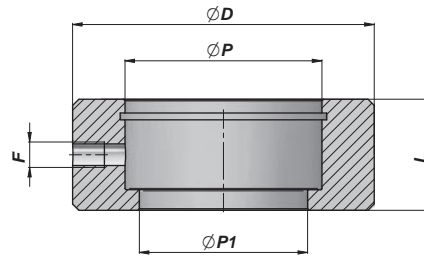
HWER


Code	ØP	ØD	L	L1	kg
HWER04002615	15	40	11	12	0.08
HWER05003520	20	50	14	16	0.17
HWER06904225	25	69	19	20	0.46
HWER07504730	30	75	20	22	0.55
HWER08005535	35	80	22	25	0.67
HWER09406240	40	94	26	28	1.09
HWER10006845	45	100	30	32	1.38
HWER12007550	50	120	33	35	2.32
HWER13809060	60	138	40	44	3.69

Box	Pcs
BOXHWER04002615	200
BOXHWER05003520	100
BOXHWER06904225	25
BOXHWER07504730	25
BOXHWER08005535	25
BOXHWER09406240	20
BOXHWER10006845	10
BOXHWER12007550	10
BOXHWER13809060	5

MATERIAL:

STEEL S355J0 (Fe510C) - S355JR (A105)

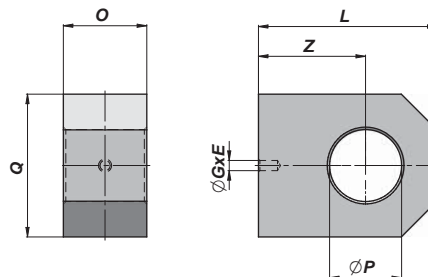
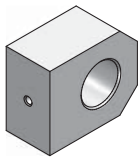


HWREN

Code	For	ØD	L	ØP	ØP1	F	kg	Box	Pcs
HWREN04015015	GE o15	40	15	26	22	M6	0,09	BOXHWREN04015	100
HWREN05019020	GE o20	50	19	35	29	M6	0,15	BOXHWREN05019	100
HWREN06023025	GE o25	60	23	42	35	M6	0,26	BOXHWREN06023	50
HWREN07028030	GE o30	70	28	47	40	M6	0,47	BOXHWREN07028	50
HWREN08530035	GE o35	85	30	55	47	M6	0,79	BOXHWREN08530	20
HWREN09535040	GE o40	95	35	62	53	M8	1,14	BOXHWREN09535	20
HWREN11040045	GE o45	110	40	68	60	M8	1,87	BOXHWREN11040	10
HWREN12040050	GE o50	120	40	75	66	M8	2,18	BOXHWREN12040	5
HWREN13850060	GE o60	138	50	90	80	M8	3,40	BOXHWREN13850	2

MATERIAL :
STEEL - S355J0 (Fe510C) - S355JR (A105)

HFOC



Code	ØP	Q	O	Z	L	ØGxE	kg
HFOC1600000	16,20	35	20	25	42	0 4,25 x 8	0,18
HFOC2000000	20,25	45	25	30	50	0 4,25 x 8	0,35
HFOC2500000	25,25	50	30	35	60	0 4,25 x 8	0,56
HFOC3000000	30,25	60	35	45	75	0 4,25 x 8	0,97
HFOC3500000	35,25	70	40	55	90	0 4,25 x 8	1,60
HFOC4000000	40,25	70	40	60	95	0 4,25 x10	1,50

MATERIALE - MATERIAL:
STEEL - S355J0 (Fe510C)