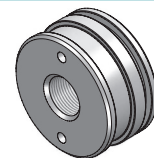
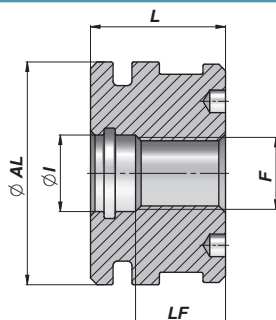


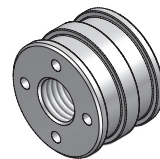
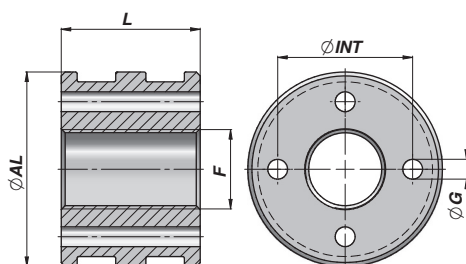
THREADED PISTON

HCPFG


Code	ØAL	F	LF	L	ØI	kg	Box	Pcs	Seal kits
HCPFG040016150	40	M16x1,5	20	30	17	0,20	BOXHCPFG040016150	100	HHGHCPFG040016
HCPFG050016150	50	M16x1,5	20	30	17	0,30	BOXHCPFG050016150	50	HHGHCPFG050016
HCPFG060024200	60	M24x2	23	35	25	0,60	BOXHCPFG060024200	25	HHGHCPFG060024
HCPFG070024200	70	M24x2	23	35	25	0,80	BOXHCPFG070024200	25	HHGHCPFG070024
HCPFG080027200	80	M27x2	28	40	28	1,20	BOXHCPFG080027200	20	HHGHCPFG080027
HCPFG100033200	100	M33x2	30	45	35	2,20	BOXHCPFG100033200	10	HHGHCPFG100033

 MATERIAL :
 STEEL - STAHL 9SMn28

PISTON FOR PLUNGER CYLINDER

HCPT


Code	ØAL	F	L	ØG	ØINT	kg	Box	Pcs	Seal kits
HCPT0301215	30	M12x1,5	35	ø 3 x 4	20	0,10	BOXHCPT0301215	50	HHGHCPPT03012
HCPT0351415	35	M14x1,5	35	ø 4 x 4	23	0,20	BOXHCPT0351415	50	HHGHCPPT03514
HCPT0401415	40	M14x1,5	35	ø 4 x 4	27	0,30	BOXHCPT0401415	50	HHGHCPPT04014
HCPT0451615	45	M16x1,5	35	ø 4 x 4	32	0,30	BOXHCPT0451615	50	HHGHCPPT04516
HCPT0502015	50	M20x1,5	35	ø 5 x 4	34	0,40	BOXHCPT0502015	50	HHGHCPPT05020
HCPT0552015	55	M20x1,5	40	ø 5 x 4	38	0,50	BOXHCPT0552015	25	HHGHCPPT05520
HCPT0602015	60	M20x1,5	40	ø 6 x 4	42	0,60	BOXHCPT0602015	25	HHGHCPPT06020
HCPT0702420	70	M24x2	45	ø 7 x 4	50	1,00	BOXHCPT0702420	25	HHGHCPPT07024
HCPT0802720	80	M27x2	45	ø 7 x 4	60	1,40	BOXHCPT0802720	20	HHGHCPPT08027
HCPT0852720	85	M27x2	45	ø 7 x 4	65	1,60	BOXHCPT0852720	10	HHGHCPPT08527
HCPT0903320	90	M33x2	50	ø 7 x 6	68	1,90	BOXHCPT0903320	10	HHGHCPPT09033
HCPT1003320	100	M33x2	50	ø 8 x 6	76	2,40	BOXHCPT1003320	10	HHGHCPPT10033
HCPT1103930	110	M39x3	55	ø 8 x 6	86	3,30			HHGHCPPT11039
HCPT1203930	120	M39x3	55	ø 10 x 6	93	4,00			HHGHCPPT12039

 MATERIAL :
 STEEL - STAHL 9SMn28