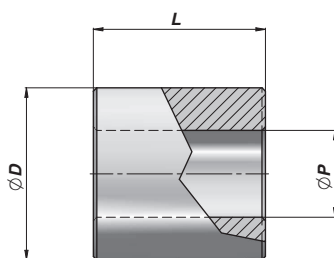
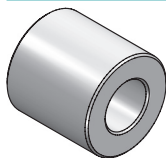


# HCBM

BUSH

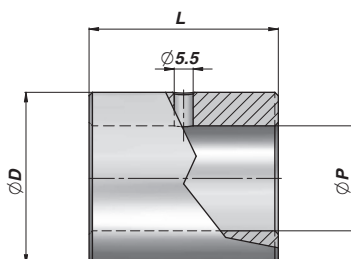
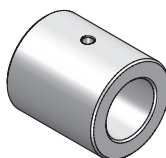


Code	ØP	ØD	L	kg	Box	Pcs
HCBM16035030	16,25	35	30	0,18	BOXHCBM16035030	50
HCBM16035060	16,25	35	60	0,36	BOXHCBM16035060	50
HCBM20040040	20,25	40	40	0,29	BOXHCBM20040040	50
HCBM20040070	20,25	40	70	0,50	BOXHCBM20040070	25
HCBM25050050	25,25	50	50	0,56	BOXHCBM25050050	50
HCBM25050080	25,25	50	80	0,89	BOXHCBM25050080	20
HCBM25050090	25,25	50	90	1,02	BOXHCBM25050090	25
HCBM30060060	30,25	60	60	0,97	BOXHCBM30060060	20
HCBM30060110	30,25	60	110	1,79	BOXHCBM30060110	10
HCBM40070070	40,25	70	70	1,60	BOXHCBM40070070	10
HCBM40070130	40,25	70	130	2,65	BOXHCBM40070130	5

 MATERIAL :  
 STEEL - S355J0 (Fe510C)

# HCBFM

BUSH - "HCBFM" TYPE



Code	ØP	ØD	L	kg	Box	Pcs
HCBFM0012025025	12,10	25	25	0,07	BOXHCBFM0012025025	100
HCBFM0016030035	16,20	30	35	0,14	BOXHCBFM0016030035	50
HCBFM1020035040	20,25	35	40	0,20	BOXHCBFM1020035040	50
HCBFM0020040040	20,50	40	40	0,28	BOXHCBFM0020040040	50
HCBFM1025040045	25,25	40	45	0,30	BOXHCBFM1025040045	50
HCBFM0025050045	25,50	50	45	0,50	BOXHCBFM0025050045	20
HCBFM1030050055	30,25	50	55	0,50	BOXHCBFM1030050055	20
HCBFM0030050055	30,50	50	55	0,53	BOXHCBFM0030050055	20
HCBFM1030060070	30,25	60	70	1,20	BOXHCBFM1030060070	10
HCBFM0030065070	30,50	65	70	1,40	BOXHCBFM0030065070	12

 MATERIAL :  
 STEEL - S355J0 (Fe510C)